

Broadway Group Sales Pricing



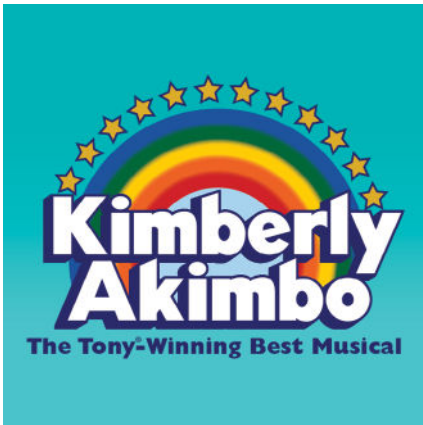
November 12–17, 2024



December 3–8, 2024



January 7–12, 2025



February 11–16, 2025



March 14–16, 2025

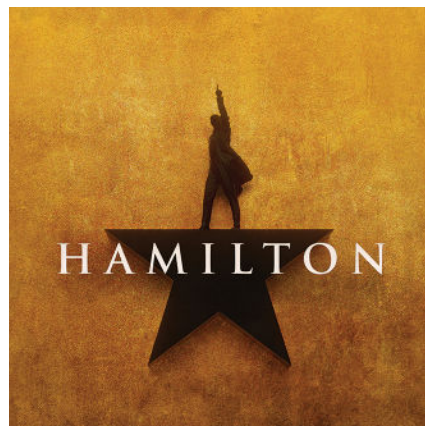


March 25–30, 2025

Book your group today
for savings & benefits!

Contact James Rich,
Associate Director of
Sales, or book online.

groups@o-pa.org
402.661.8516
o-pa.org/groups

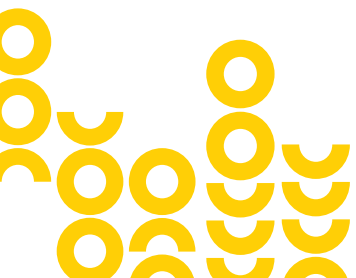


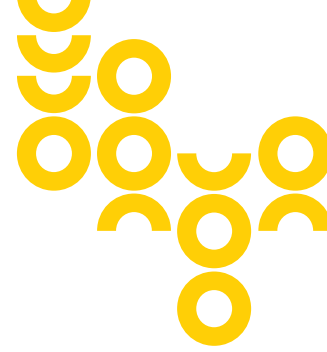
May 7–18, 2025



June 10–15, 2025

Group pricing includes all taxes and fees. Standard price reflects the final price of a ticket when purchased on ticketomaha.com (including all taxes and fees). All group prices are subject to change.



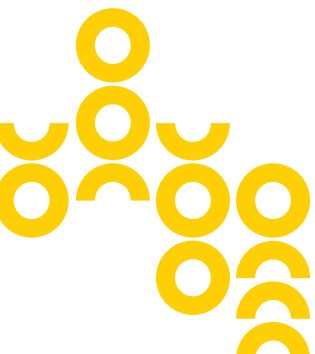


Group Savings & Benefits

Unlock exclusive perks when you book tickets for 10+ people!

- Discounts and reduced handling fees on Broadway tickets and other select shows
- Priority seating before tickets go on sale to the public
- Flexible payment options
- Ability to adjust your order before final payment
- Complimentary bus parking
(subject to availability)
- Personalized service to find the best seats for your budget and plan pre- and post-show activities

Save even more with Early Bird Pricing through June 2024!





Group Sales Pricing

Book your group today!

Contact James Rich,

Associate Director of Sales or book online

groups@o-pa.org | [402.661.8516](tel:402.661.8516) | o-pa.org/groups

November 12–17, 2024 Orpheum Theater

| Tuesday - Sunday; All Evening Performances | | | | |
|--|-------|---------|---------|------|
| | PL1 | PL2 | PL3 | PL4 |
| Standard | \$108 | \$89 | \$69 | \$43 |
| Early Bird | \$102 | \$70 | \$51.25 | \$40 |
| Group 10+ | \$102 | \$77.50 | \$56.75 | \$40 |
| Group 50+ | \$102 | \$73.75 | \$54 | \$40 |

| Saturday & Sunday Matinee | | | | |
|---------------------------|-------|------|------|------|
| | PL1 | PL2 | PL3 | PL4 |
| Standard | \$108 | \$89 | \$69 | \$43 |
| Group 10+ | \$102 | \$85 | \$65 | \$40 |

* Group leaders receive 1 comp per 40 paid excluding Sat. and Sun. matinee.

Unlock exclusive perks when you book tickets for 10+ people!

- Ticket discounts and reduced handling fees
- Priority seating
- Flexible payment options
- Personalized service
- [and more »](#)

Group pricing includes all taxes and fees. Standard price reflects the final price of a ticket when purchased on ticketomaha.com (including all taxes and fees). All group prices are subject to change.



“VIVACIOUS AND DELIGHTFULLY GLITZY!”

- Michelle Ruiz, *Vogue*

The sensational Broadway revival dazzles with celebrated classic songs, including “Don’t Rain On My Parade,” “I’m the Greatest Star,” and “People.” This bittersweet comedy is the story of the indomitable Fanny Brice, a girl from the Lower East Side who dreamed of a life on the stage. Everyone told her she’d never be a star, but then something funny happened—she became one of the most beloved performers in history, shining brighter than the brightest lights of Broadway.

Featuring one of the most iconic scores of all time by Jule Styne and Bob Merrill, an updated book from Harvey Fierstein based on the original classic by Isobel Lennart, tap choreography by Ayodele Casel, choreography by Ellenore Scott, and direction from Michael Mayer, this love letter to the theatre has the whole shebang!



Group Sales Pricing

Book your group today!

Contact James Rich,

Associate Director of Sales or book online

groups@o-pa.org | [402.661.8516](tel:402.661.8516) | o-pa.org/groups

December 3–8, 2024 Orpheum Theater

| Tuesday - Saturday Evenings | | | | |
|-----------------------------|-------|---------|---------|------|
| | PL1 | PL2 | PL3 | PL4 |
| Standard | \$108 | \$89 | \$64 | \$36 |
| Early Bird | \$102 | \$70 | \$47.50 | \$35 |
| Group 10+ | \$102 | \$77.50 | \$52.50 | \$35 |
| Group 50+ | \$102 | \$73.75 | \$50 | \$35 |

| Thursday (December 5) Matinee | | | | |
|-------------------------------|---------|---------|------|------|
| | PL1 | PL2 | PL3 | PL4 |
| Group 10+ | \$74.25 | \$62.50 | \$45 | \$35 |

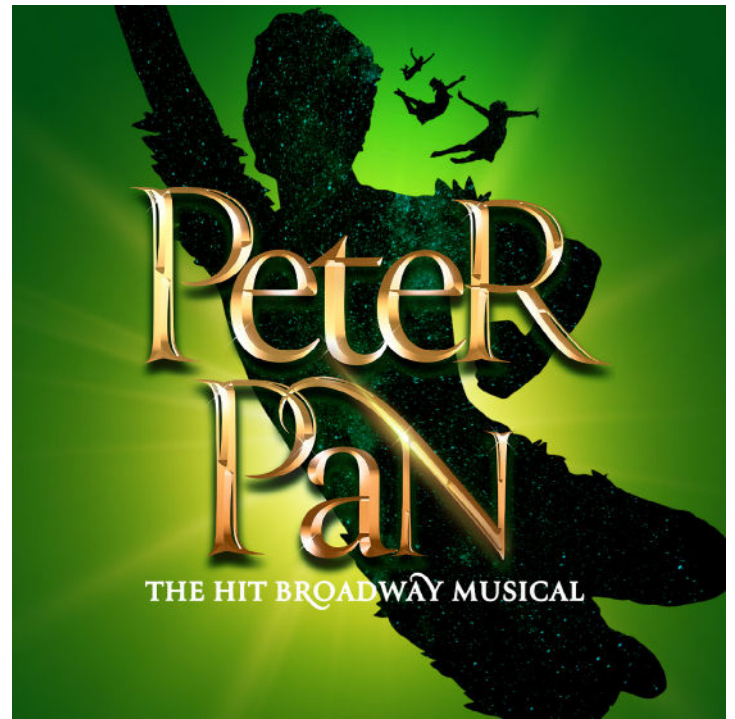
| Saturday & Sunday Matinee | | | | |
|---------------------------|-------|------|------|------|
| | PL1 | PL2 | PL3 | PL4 |
| Standard | \$108 | \$89 | \$64 | \$36 |
| Group 10+ | \$102 | \$85 | \$60 | \$35 |

* Group leaders receive 1 comp per 40 paid excluding Sat. and Sun. matinee.

Unlock exclusive perks when you book tickets for 10+ people!

- Ticket discounts and reduced handling fees
- Priority seating
- Flexible payment options
- Personalized service
- [and more »](#)

Group pricing includes all taxes and fees. Standard price reflects the final price of a ticket when purchased on ticketomaha.com (including all taxes and fees). All group prices are subject to change.



“...there are few experiences more EXHILARATING.”

- *The New York Times*

This high-flying musical has been thrilling audiences of all ages for close to 70 years and is now being brought back to life in a new adaptation by celebrated playwright Larissa FastHorse, directed by Emmy Award winner Lonny Price and with choreography by Lorin Latarro. The adventure begins when Peter Pan and his mischievous sidekick, Tinker Bell, visit the bedroom of the Darling children late one night. With a sprinkle of fairy dust and a few happy thoughts, the children are taken on a magical journey they will never forget.

This extraordinary musical full of excitement and adventure features iconic and timeless songs including “I’m Flying,” “I Gotta Crow,” “I Won’t Grow Up,” and “Neverland.” PETER PAN embraces the child in us all so go on a journey from the second star to the right and straight on ‘til morning - your entire family will be Hooked!



Group Sales Pricing

Book your group today!

Contact James Rich,

Associate Director of Sales or book online

groups@o-pa.org | [402.661.8516](tel:402.661.8516) | o-pa.org/groups

January 7–12, 2025

Orpheum Theater

| Tuesday - Friday; Saturday Matinee; Sunday Matinee & Evening | | | | | |
|--|------|---------|---------|------|-------|
| | PL1 | PL2 | PL3 | PL4 | PIT |
| Standard | \$98 | \$81 | \$59 | \$36 | \$103 |
| Early Bird | \$92 | \$63.50 | \$43.75 | \$35 | \$97 |
| Group 10+ | \$92 | \$70.25 | \$48 | \$35 | \$97 |
| Group 50+ | \$92 | \$67 | \$46 | \$35 | \$97 |

| Saturday Evening | | | | | |
|------------------|------|------|------|------|-------|
| | PL1 | PL2 | PL3 | PL4 | PIT |
| Standard | \$98 | \$81 | \$59 | \$36 | \$103 |
| Group 10+ | \$92 | \$77 | \$55 | \$35 | \$97 |

* Group leaders receive 1 comp per 40 paid excluding Saturday matinee.

Unlock exclusive perks when you book tickets for 10+ people!

- Ticket discounts and reduced handling fees
- Priority seating
- Flexible payment options
- Personalized service
- [and more »](#)

Group pricing includes all taxes and fees. Standard price reflects the final price of a ticket when purchased on ticketomaha.com (including all taxes and fees). All group prices are subject to change.



“A very fun whodunit that strikes contemporary parallels on the way to its grand reveal.”

- *The New York Times*

Murder and blackmail are on the menu when six mysterious guests assemble at Boddy Manor for a night they’ll never forget! Was it Mrs. Peacock in the study with the knife? Or was it Colonel Mustard in the library with the wrench? Based on the fan-favorite 1985 Paramount pictures movie and inspired by the classic Hasbro board game, **CLUE** is the ultimate whodunit that will leave you dying of laughter and keep you guessing until the final twist.



Group Sales Pricing

Book your group today!

Contact James Rich,

Associate Director of Sales or book online

groups@o-pa.org | [402.661.8516](tel:402.661.8516) | o-pa.org/groups

February 11-16, 2025 Orpheum Theater

Tuesday - Friday; Saturday Matinee; Sunday Matinee & Evening

| | PL1 | PL2 | PL3 | PL4 |
|------------|-------|---------|---------|------|
| Standard | \$108 | \$89 | \$69 | \$43 |
| Early Bird | \$102 | \$70 | \$51.25 | \$40 |
| Group 10+ | \$102 | \$77.50 | \$56.75 | \$40 |
| Group 50+ | \$102 | \$73.75 | \$54 | \$40 |

Saturday Evening

| | PL1 | PL2 | PL3 | PL4 |
|-----------|-------|------|------|------|
| Standard | \$108 | \$89 | \$69 | \$43 |
| Group 10+ | \$102 | \$85 | \$65 | \$40 |

* Group leaders receive 1 comp per 40 paid.

Unlock exclusive perks when you book tickets for 10+ people!

- Ticket discounts and reduced handling fees
- Priority seating
- Flexible payment options
- Personalized service
- [and more »](#)

Group pricing includes all taxes and fees. Standard price reflects the final price of a ticket when purchased on ticketomaha.com (including all taxes and fees). All group prices are subject to change.



“A howlingly funny heartbreaker of a show.”

- *The New York Times*

A new musical about growing up and growing old (in no particular order), **KIMBERLY AKIMBO** is the winner of 5 Tony Awards® including BEST MUSICAL. It features Tony Award-winning book and lyrics by David Lindsay-Abaire (*Shrek*), a Tony Award-winning score by Jeanine Tesori (*Fun Home*), choreography by Danny Mefford (*Dear Evan Hansen*) and direction by Tony-nominated director Jessica Stone.

Kimberly is about to turn 16 and recently moved with her family to a new town in suburban New Jersey. In this “profoundly funny and deeply moving” musical (*The New York Times*), Kim is forced to navigate family dysfunction, a rare genetic condition, her first crush ... and possible felony charges. Ever the optimist, she is determined to find happiness against all odds and embark on a great adventure.



Group Sales Pricing

Book your group today!

Contact James Rich,

Associate Director of Sales or book online

groups@o-pa.org | [402.661.8516](tel:402.661.8516) | o-pa.org/groups

March 14–16, 2025
Orpheum Theater

| All Performances | | | | | |
|------------------|-------|---------|---------|------|-------|
| | PL1 | PL2 | PL3 | PL4 | PIT |
| Standard | \$108 | \$89 | \$64 | \$38 | \$115 |
| Early Bird | \$102 | \$70 | \$49.75 | \$35 | \$107 |
| Group 10+ | \$102 | \$77.50 | \$55 | \$35 | \$107 |
| Group 50+ | \$102 | \$73.75 | \$52.50 | \$35 | \$107 |

* Group leaders receive 1 comp per 40 paid.



**“SPELLBINDING.
HADESTOWN, for a while,
makes the whole world
forget its troubles.”**

- Marilyn Stasio, *Variety*

COME SEE HOW THE WORLD COULD BE.

Welcome to HADESTOWN, where a song can change your fate. Winner of eight 2019 Tony Awards® including Best Musical and the 2020 Grammy Award® for Best Musical Theater Album, this acclaimed new show from celebrated singer-songwriter Anais Mitchell and innovative director Rachel Chavkin (*Natasha, Pierre & The Great Comet of 1812*) is a love story for today... and always.

Intertwining two mythic tales – that of young dreamers Orpheus and Eurydice, and that of King Hades and his wife Persephone – HADESTOWN is a haunting and hopeful theatrical experience that grabs you and never lets go.

Unlock exclusive perks when you book tickets for 10+ people!

- Ticket discounts and reduced handling fees
- Priority seating
- Flexible payment options
- Personalized service
- [and more »](#)

Group pricing includes all taxes and fees. Standard price reflects the final price of a ticket when purchased on ticketomaha.com (including all taxes and fees). All group prices are subject to change.



Group Sales Pricing

Book your group today!

Contact James Rich,

Associate Director of Sales or book online

groups@o-pa.org | [402.661.8516](tel:402.661.8516) | o-pa.org/groups

March 25–30, 2025 Orpheum Theater

| Tuesday - Friday; Saturday & Sunday Evening | | | | |
|---|-------|---------|---------|------|
| | PL1 | PL2 | PL3 | PL4 |
| Standard | \$108 | \$89 | \$69 | \$43 |
| Early Bird | \$102 | \$70 | \$51.25 | \$40 |
| Group 10+ | \$102 | \$77.50 | \$56.75 | \$40 |
| Group 50+ | \$102 | \$73.75 | \$54 | \$40 |

| Saturday & Sunday Matinee | | | | |
|---------------------------|-------|------|------|------|
| | PL1 | PL2 | PL3 | PL4 |
| Standard | \$108 | \$89 | \$69 | \$43 |
| Group 10+ | \$102 | \$85 | \$65 | \$40 |

* Group leaders receive 1 comp per 40 paid excluding Sat. and Sun. matinee.



“A tap-dancing, razzle-dazzling embrace of everything you love about musical theater.”

- *Deadline*

Winner of 4 Tony Awards®, including Best Choreography and Best Costumes, and the Grammy Award® for Best Musical Theater Album, **SOME LIKE IT HOT** is “A Super-Sized, All-Out Song-And-Dance Spectacular!” - *The New York Times*

Set in Chicago when Prohibition has everyone thirsty for a little excitement, **SOME LIKE IT HOT** is the “glorious, big, high-kicking” (*Associated Press*) story of two musicians forced to flee the Windy City after witnessing a mob hit. With gangsters hot on their heels, they catch a cross-country train for the life-changing, life-changing trip of a lifetime.

Unlock exclusive perks when you book tickets for 10+ people!

- Ticket discounts and reduced handling fees
- Priority seating
- Flexible payment options
- Personalized service
- [and more »](#)

Group pricing includes all taxes and fees. Standard price reflects the final price of a ticket when purchased on ticketomaha.com (including all taxes and fees). All group prices are subject to change.



Group Sales Pricing

Book your group today!

Contact James Rich,

Associate Director of Sales or book online

groups@o-pa.org | [402.661.8516](tel:402.661.8516) | o-pa.org/groups

May 7-18, 2025

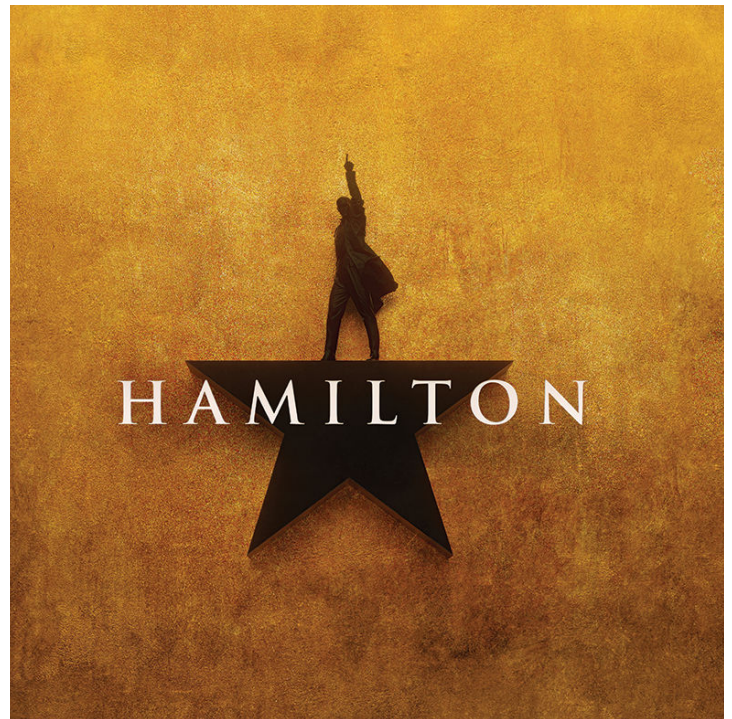
Orpheum Theater

| | TBD | | | |
|-----------|--------|------|------|------|
| | PL1 | PL2 | PL3 | PL4 |
| Standard | \$\$\$ | \$\$ | \$\$ | \$\$ |
| Group 10+ | \$\$\$ | \$\$ | \$\$ | \$\$ |
| Group 50+ | \$\$\$ | \$\$ | \$\$ | \$\$ |

Unlock exclusive perks when you book tickets for 10+ people!

- Ticket discounts and reduced handling fees
- Priority seating
- Flexible payment options
- Personalized service
- [and more »](#)

Group pricing includes all taxes and fees. Standard price reflects the final price of a ticket when purchased on ticketomaha.com (including all taxes and fees). All group prices are subject to change.



“The greatest American musical in decades.”

- *Time Out*

A revolutionary story of passion, unstoppable ambition, and the dawn of a new nation.

HAMILTON is the epic saga that follows the rise of Founding Father Alexander Hamilton as he fights for honor, love, and a legacy that would shape the course of a nation. Based on Ron Chernow’s acclaimed biography and set to a score that blends hip-hop, jazz, R&B, and Broadway, **HAMILTON** has had a profound impact on culture, politics, and education. **HAMILTON** features book, music, and lyrics by Lin-Manuel Miranda, direction by Thomas Kail, choreography by Andy Blankenbuehler, and musical supervision and orchestrations by Alex Lacamoire. In addition to its 11 Tony Awards®, it has won Grammy®, Olivier Awards, the Pulitzer Prize for Drama, and an unprecedented special citation from the Kennedy Center Honors.



Group Sales Pricing

Book your group today!

Contact James Rich,

Associate Director of Sales or book online

groups@o-pa.org | [402.661.8516](tel:402.661.8516) | o-pa.org/groups

June 10–15, 2025
Orpheum Theater

| All Performances | | | | |
|------------------|-------|------|------|------|
| | PL1 | PL2 | PL3 | PL4 |
| Early Bird | \$114 | \$94 | \$74 | \$54 |

Unlock exclusive perks when you book tickets for 10+ people!

- Ticket discounts and reduced handling fees
- Priority seating
- Flexible payment options
- Personalized service
- [and more »](#)

Group pricing includes all taxes and fees. Standard price reflects the final price of a ticket when purchased on ticketomaha.com (including all taxes and fees). All group prices are subject to change.



“A RIVETING ADRENALINE RUSH!”

- *The Washington Post*

He is one of the greatest entertainers of all time. Now, Michael Jackson’s unique and unparalleled artistry comes to Omaha as **MJ**, the multi Tony Award®-winning new musical centered around the making of the 1992 Dangerous World Tour, begins a tour of its own. Created by Tony Award®-winning Director/Choreographer Christopher Wheeldon and two-time Pulitzer Prize winner Lynn Nottage, **MJ** goes beyond the singular moves and signature sound of the star, offering a rare look at the creative mind and collaborative spirit that catapulted Michael Jackson into legendary status. **MJ** is startin’ somethin’ as it makes its premiere at the Orpheum Theater.