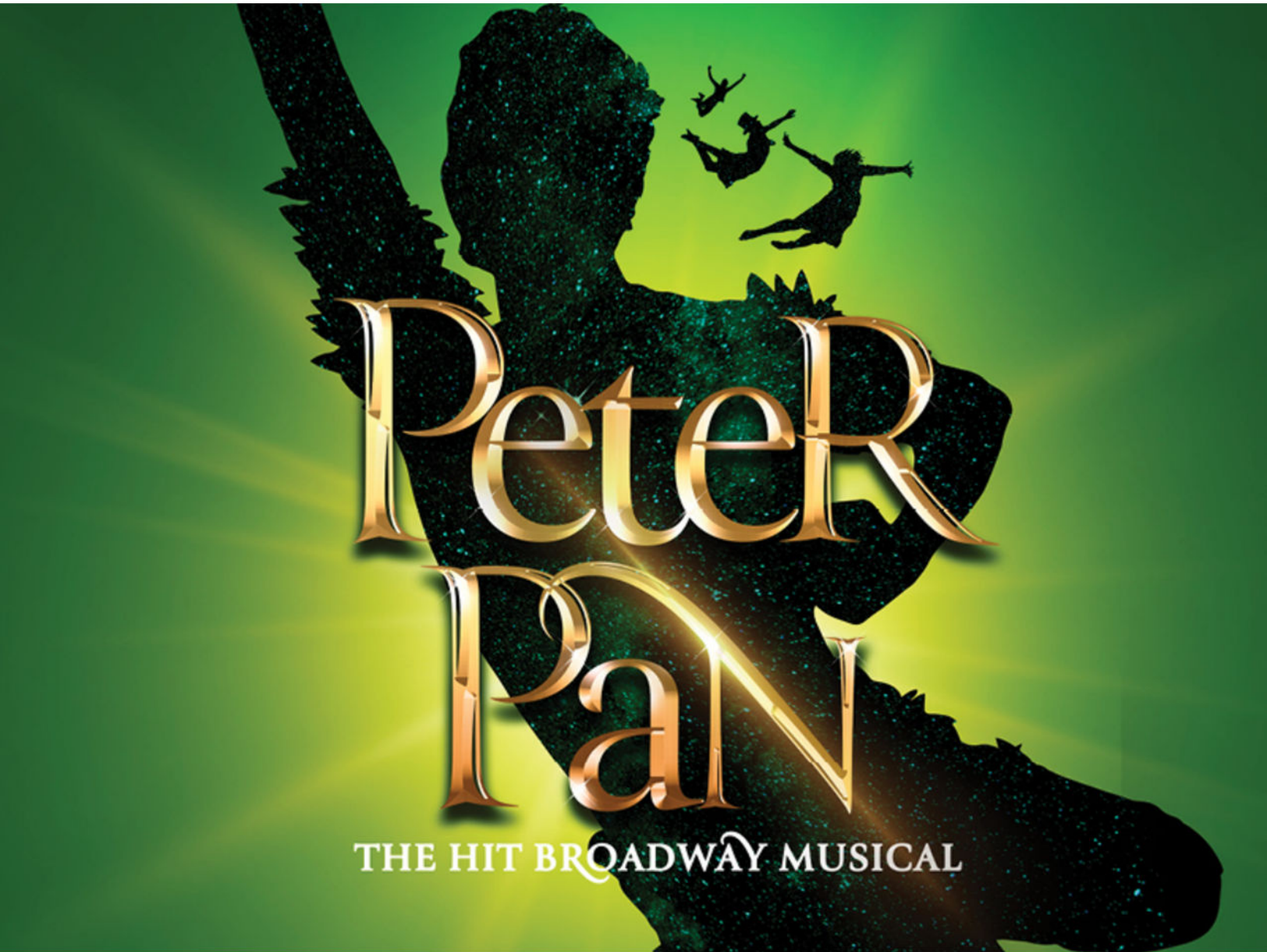


SENSORY GUIDE



GENERAL CONSIDERATIONS

- Duration: Approximately 2 hours 30 minutes with one intermission.
- The decibel levels recorded in this guide account for moments of applause; sound levels may vary depending on the specific audience.
- The audit for this Sensory Guide was conducted by a member of the Sensory Access team who is neurodivergent and hyperacoustic.

SENSORY IMPACT KEY



Auditory Impact



Visual Impact



Emotional Impact



Strobing Effects

COMMON DECIBEL (DB) LEVELS

70	Office/classroom chatter
80	Busy traffic, dog barking
90	Hairdryer
100	Lawnmower, construction site
110	Concert, night club
120	Police siren, airplane taking off



SENSORY ACCESS

ACCESS FOR ALL

ACT ONE

SCENE

DESCRIPTION

SENSORY

Overture & Prologue

- Some high-pitched notes
- Very loud music
- Disembodied voice over with announcements
- Loud music starts before lights are fully out
- Up to 90.3 dB



Scene 1

Darling home; children's bedroom

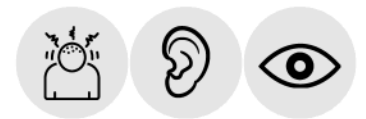
- High-pitched sounds
- Loud music
- Loud yelling/shouting
- Morphing shadows projected onto scenery
- Up to 99.8 dB



Scene 2

Flight to Neverland; storm

- Moving background projections
- Thunder sound effects
- Lightning effects (strobe-like)
- Up to 96.7 dB



Scene 3

Neverland in front of Underground Home

- Loud yelling/shouting
- Loud music
- Tap dancing sounds
- Arrow and spear props used
- Up to 97 dB



Scene 4

Another part of the forest

- Moving projections
- Sword fighting
- Loud music
- Sudden blackout
- Up to 99.9 dB



ACT TWO

SCENE

DESCRIPTION

SENSORY

Scene 1

Another place on the island

- Loud music starts abruptly
- Shrill voice
- Encouraged audience interaction (cheering/booing)
- Bright spotlight effect
- Up to 101.4 dB



Scene 2

The Underground, above and below

- Emotional impact
- Blinking lights
- Encouraged audience interaction (clapping)
- Up to 101.6 dB



Scene 3

Jolly Roger

- Complex noise
- Loud music
- Depiction of fighting
- Sudden blackout at the end of the scene
- Up to 100.4 dB



Scene 4

Darling home, children's bedroom

- Up to 101.6 dB



Scene 5

Darling home, children's bedroom, years later

- Confetti gun during the bows from both sides of the audience - falls over the lower levels of the theater
- Up to 100.2 dB



TERMS OF USE

© 2024 Sensory Access. All rights reserved.

Ownership and Copyright: The Sensory Guides provided by Sensory Access are considered the intellectual property of the organization and are protected by copyright laws. All rights are reserved.

Prohibited Uses: Under no circumstances should the Sensory Guides be reproduced, distributed, publicly displayed or modified without prior written consent from Sensory Access. It is strictly prohibited to create derivative works or to use the guides for commercial purposes without obtaining explicit permission.

Digital Rights Management (DRM): If the Sensory Guide is available in digital format, users must not attempt to circumvent any digital rights management or other security measures that are in place.

Termination of License: Sensory Access reserves the right to terminate the license granted herein at any time if users breach these terms of use. Upon termination, users must cease all use of the Sensory Guide.

Contact Information: For inquiries regarding the use of Sensory Guides or to request permission for any use not covered by these terms, please contact:

[Sensory Access](#)

385 NW Dogwood St

Issaquah, WA 98027

contact@sensoryaccessforall.com

+1 206-409-6080

By accessing and using the Sensory Guides, users agree to abide by these terms of use. Failure to comply with these terms may result in legal action.

